

Horseshoe Lake Aquatic Plant Management (APM) Plan Update

**2009 – 2011 EWM
Management and Control
Project**

Grant Status

- **February 2006 (?) Aquatic Invasive Species (AIS) Education, Prevention, and Planning Grant #1**
 - Awarded, end date of December 31st, 2009
 - \$8,543 with a 50% sponsor match
 - Used for watercraft inspection and lake user education
 - May still be used for watercraft inspection and education
- **Spring 2007 AIS Early Detection and Rapid Response Grant #1**
 - Awarded July 16th, 2007. Ends December 31st, 2009
 - \$10,000 with a 50% Sponsor Match required
 - Used for treatment, plant surveys, buoys, and signs
 - Continues to be used for spring and early summer EWM control and plant surveying

Grant Status continued:

- **February 2009 Aquatic Invasive Species (AIS) Education, Prevention, and Planning Grant #2**
 - Applied for, but denied due to extremely limited state funds availability (ranked 15 out of 45, only 1 project in NW Wisconsin was funded)
 - \$9,820.00 w/25% sponsor match required
 - Was to be used for a Lake User Survey, completion of a 5-yr Aquatic Plant Management Plan, and an implementation plan
- **June 2009 AIS Early Detection and Response Grant #2**
 - If Lake Association approval is given, it will be applied for in June 2009 with a begin date of July 1, 2009 and an end date of December 31st, 2011
 - \$20,822.00 w/25% sponsor match required over a 2-1/2 year period
 - To be used for a Lake User Survey, the completion of an APM Plan, support for all plant surveying and EWM monitoring, EWM management and control, watercraft inspection, in-lake monitoring, and lake user education through 2011.
 - **HAS ESSENTIALLY ALREADY BEEN AWARDED, BUT WILL NOT START UNTIL JULY 1st!!!**

Components of the new AIS Grant Project

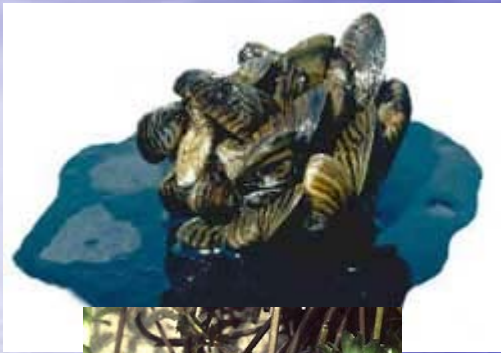
- **Public Participation and Involvement**
 - Lake User Survey (2009)
 - Open Meetings
 - Project Updates on Lake Association Webpage
 - www.hlake.org
- **Watercraft Inspection (2009-2011)**
 - “Clean Boats, Clean Waters” at public access
 - Involvement with Turtle Lake High School Students
- **Lake User Education (2009-2011)**
 - ½ day Lake Education Workshop
 - Articles and mailings of pertinent material

Components continued:

- Continued Monitoring and Mapping of EWM, CLP, and PL



Components continued: In-Lake Aquatic Invasive Species Monitoring



Hydrilla
Hydrilla verticillata
Photo by Vic Ranney
Copyright 1999 Univ. Florida

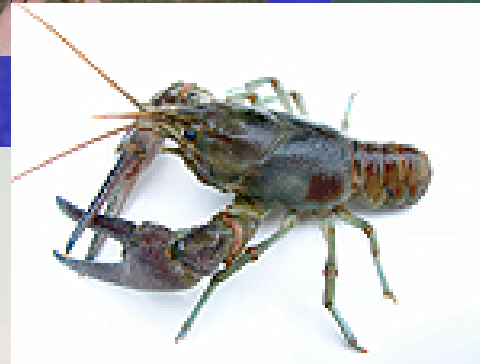


Photo by: Angela Bobeldyk



Components continued:

EWM Management & Control:

CLP and PL Control

- Continued large-scale removal of EWM by Divers
- Limited herbicide application when and where necessary
- Physical removal of EWM by Lake Residents
- Physical removal of CLP and PL by Lake Residents
- Other management recommendations made in the new APM Plan

Components continued:

5-yr DNR approved Aquatic Plant Management Plan

- Analysis of lake and watershed characteristics
- Analysis of all EWM and other plant surveys completed
- Compilation and analysis of all past and current weed management activities
 - **Important to know what individual landowners have done in the past as well**

APM Planning continued:

- Evaluation of critical habitat areas, fishery, and wildlife
- Complete analysis of existing water quality data
- Documentation of aquatic plant problems
- Protection of desirable aquatic plants
- Analysis of all possible plant management alternatives, and the impacts they would have on the lake

APM Planning continued:

- Incorporation of Public Input into determining plant management recommendations
- Plant management recommendations based on a 5-yr management plan
- Response Plan for other invasive species that may get introduced
- An implementation plan for all recommendations made.
- APM Plan submitted to the WDNR for approval
 - DNR approval makes the plan eligible for additional funding support from the state

Total Budget Breakdown for AIS Early Detection and Rapid Response Grant #2

- Lake User Survey \$2,617.00
- APM Planning \$3,840.00
- EWM Treat & Monit. \$9,500.00
- Lake User Educ. \$4,865.00
- **\$20,822.00**

Begin and End Dates

- **Project will begin officially on July 1st, 2009**
- **Project will end officially on December 31st, 2011**
- It is very likely that by the end date of this project the HLIA will be self-sustaining in all aquatic plant management activities

THE END

Any Questions for Matt or me?